



PREPARING FOR STREET OUTREACH

Preparation for street outreach during the winter months means stocking up on cold-weather sleeping bags, heavy duty tarps, and tents.

OUR MISSION

Our mission is to promote and encourage public well-being; provide homeless prevention resources to those living in poverty and threatened with homelessness; to help individuals and families survive and exit homelessness; and to expand opportunities and empower people to be self-sufficient in east-central Iowa cities and counties.

"The ache for a home lives in all of us, the safe place where we can go as we are and not be questioned."

~ Maya Angelou

OUR PROGRAMS

Rapid Rehousing

Short and long-term rental assistance and case management serving individuals and families who are homeless

Street Outreach

Outreach program with emphasis on reaching those living unsheltered and providing basic needs

Coordinated Entry

Ensures that all people experiencing a housing crisis have fair and equal access to safe housing

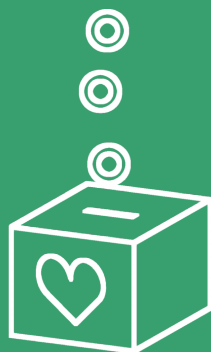


**Interested in
donating to help
the homeless?**

Checks can be mailed to

CSEI

7600 Commerce Park Dr.
Dubuque, IA 52002



NOVEMBER WAS NATIONAL HOMELESS AWARENESS MONTH

During the month of November we launched a social media campaign centered around resource sharing and awareness building. Additionally, we organized a supply drive to provide essentials for those in our community who are living outside. See more about this project on [page 3!](#)



DID YOU KNOW?

You could fill **five football** stadiums with the homeless population of the U.S.

At least **567,715** people were homeless on a given night in January of 2019 in the U.S., according to the Department of Housing and Urban Development's (HUD) annual Point-in-Time (PIT) 2019 count.



HOUSING HOTLINE:
1.833.587.8322
Webpage: tinyurl.com/CSEIHomeless

TOP STORY: CSEI FEATURED IN TELEGRAPH HERALD

Click [HERE](#) to read the full story!

Dubuque's homeless face new challenges this winter

BY JOSHUA IRVINE josh.irvine@thmedia.com Nov 27, 2022 Updated Nov 27, 2022

"Community Solutions of Eastern Iowa is the agency tasked with monitoring and providing assistance to homeless residents who live outdoors, either out of personal preference or due to a poor relationship with shelter providers.

Establishing contact is the most important part of the job, said Shelby Eipperle, a CSEI community services advocate, since the literally homeless are often the hardest to track.

"Our number one concern is reaching folks who are most at risk," Eipperle said.

This summer, CSEI counted 26 unsheltered people in Dubuque County. While the number of people living outdoors typically goes down during the winter, this winter is expected to see more unhoused people than usual, according to Eipperle.

"Twenty-six is the largest number we've ever seen, and I suspect we'll see that same sort of growth when we do our wintertime count," Eipperle said.

During the winter, many unhoused residents find a friend or good Samaritan to board them, Eipperle said, or migrate to a shelter such as Dubuque Rescue Mission, which recently increased its available space from 18 beds to as many as 35. Rescue Mission Executive Director Rick Mihm said the number of residents there normally doubles during winter."



Click [here](#) to watch our impact video!

TYPES OF HOMELESSNESS

Source: Red Nose Day (2021)

In our last newsletter, we discussed transitional homelessness.

"People can also experience '**episodic homelessness**, whether they are currently unhoused or experienced at least three periods of homelessness within the last 12 months.

Like transitional homelessness, many of those facing episodic homelessness are younger or dealing with a disabling condition. These conditions could be substance use disorder, mental illness, and other mental and/or physical health conditions. In some cases, some episodically unhoused people have seasonal or minimum wage income jobs.

Episodic homelessness can eventually become chronic homelessness without adequate resources and support."



STUDENT SOCIAL MEDIA ANALYSIS

CSEI was fortunate to be selected to participate in Dr. Katrina Neely Farren-Eller's Social Media Campaign Class at Loras College. A student chose to work with CSEI because of a personal interest in homelessness, and spent the semester analyzing CSEI's online presence, looking at Keep Performance Indicators and creating a 6-month content plan, among several other tasks. She then helped her "client", CSEI, formulate a communication plan using social media platforms. CSEI staff had already begun to look at ways to increase name recognition and understanding of the services we provide, and the student's work coincided with ours.

The student noted that CSEI was of particular interest to her because she and her mother spent time living with relatives following her parents' divorce and her mother being in a serious car accident. She noted that was a very challenging time in her life, and it wasn't too difficult to imagine how much worse it could have been without family there to help. As this student graduates from college, CSEI will begin implementing several of her recommendations. Look for us on our own Facebook page (no longer included in ECIA's postings), with regular updates. We hope you'll help us spread the word on CSEI in your community.

CARE & SHARE TO HELP THE HOMELESS

Items can be dropped off to

United Way - 215 W 6th St. Dubuque, IA

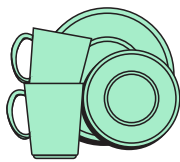
Asbury City Hall - 5290 Grand Meadow Dr, Asbury, IA

Our Savior Lutheran Church - 116 Guetzko Court, Manchester, IA

The Stone Church - 18175 222nd St, Manchester, IA



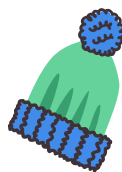
NEW WARM SOCKS



DISHES & CUTLERY



COLD WEATHER SLEEPING BAG



KNIT HATS



TENTS



HYGIENE ITEMS



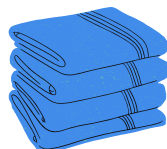
CLEANING SUPPLIES



BACKPACKS



GLOVES OR MITTENS



TOWELS & LINENS

Coming soon



WINTER POINT IN TIME COUNT
January 2023



CSEI FACEBOOK PAGE LAUNCH
January 2023

Coordinated Entry Housing Hotline

Delaware
County

Dubuque
County

1.833.587.8322



764
**HOUSING
INSTABILITY CALLS
ANSWERED**



66
**INDIVIDUALS
SERVED IN RAPID
REHOUSING**



44
**INDIVIDUALS
SERVED THROUGH
STREET OUTREACH**

HOMELESS PERSONS' MEMORIAL DAY: DECEMBER 21ST

Source: National Coalition for the Homeless (2021)

"Observing Homeless Persons' Memorial Day prioritizes three objectives:

- 1) to shine a bright light on the dark truth that homelessness kills;
- 2) to ensure that those who died are not forgotten; and
- 3) to mobilize action to end what is often a death sentence – homelessness.

Thousands of Americans experiencing homelessness die prematurely and unnecessarily."

This quarter alone, our community lost **two** homeless men. These individuals were both former participants with CSEI's street outreach program.

It is with these men in mind that CSEI remains dedicated to its mission:

to help individuals and families survive and exit homelessness.

THANK YOU

**Teri & Stanley
Woodworth**

generously
donated 50 supply
bags for our street
outreach efforts.

The bags included
knit hats, shampoo,
toothpaste,
deodorant, and
other essentials.



GIFTS AND GRANTS

Many thanks to our partners for making this work possible!

Anonymous Donor
Community Foundation of Greater Dubuque
Fidelity Bank & Trust
GreenState Credit Union
Stephanie & John Ottavi
Sisters of the Presentation
Theisen's 'More for Your Community'
Teri & Stanley Woodworth

"Addressing housing instability and homelessness in the Dubuque area is an urgent need. We hope our contribution assists in creating a better life for those without a stable home."

~ Sisters of The Presentation of the Blessed Virgin Mary

SISTERS
OF THE PRESENTATION
of the Blessed Virgin Mary

Community Foundation
of Greater Dubuque

THEISEN'S
More For Your
Community

GreenState
CREDIT UNION

FIDELITY
BANK & TRUST

Hotline: 1.833.587.8322

Click [here](#) to visit our webpage